

## Druckarmaturen BEL 90°

### Anschluss

Rohranschluss für Schneidringverbindung L-Baureihe

### Norm

ISO 8434-1

### Anwendung

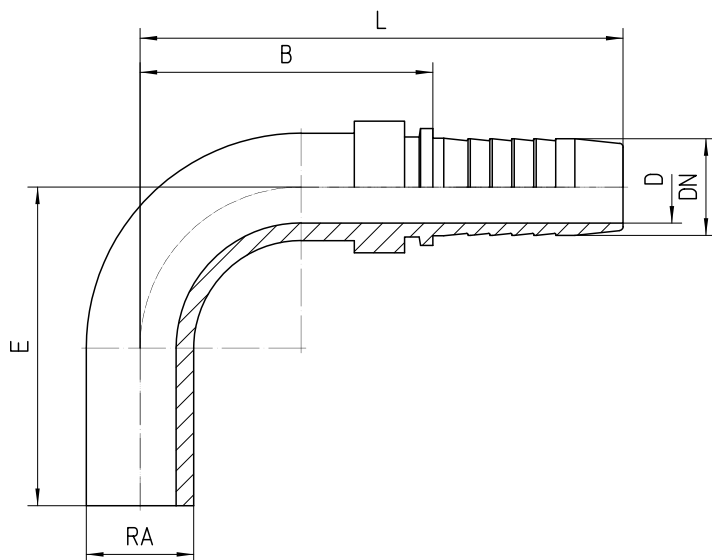
TE / SN / SC / SN-K / PTFE Schläuche

### Werkstoff

Stahl

### Oberfläche

galvanisch verzinkt





Bestell-Nr.	DN in mm	RA	min. D in mm	E±3 in mm	B±3 in mm	L±3 in mm
<b>1.109-03-04</b>	06	6L	3,0	35	36	63
<b>1.109-04-04</b>	06	8L	4,0	38	38	65
<b>1.109-05-04</b>	06	10L	4,0	40	40	67
<b>1.109-04-05</b>	08	8L	5,0	35	42	69
<b>1.109-05-05</b>	08	10L	5,5	40	41	68
<b>1.109-06-05</b>	08	12L	5,5	42	47	74
<b>1.109-05-06</b>	10	10L	7,0	40	38	68
<b>1.109-06-06</b>	10	12L	7,0	42	45	75
<b>1.109-08-06</b>	10	15L	7,0	45	51	81
<b>1.109-06-08</b>	12	12L	7,0	42	48	79
<b>1.109-08-08</b>	12	15L	10,0	45	54	85
<b>1.109-10-08</b>	12	18L	10,0	60	62	93
<b>1.109-10-10</b>	16	18L	13,0	60	61	95
<b>1.109-12-12</b>	19	22L	15,0	65	71	110
<b>1.109-16-16</b>	25	28L	21,0	80	79	125

<b>1.109-20-20</b>	31	35L	27,0	90	91	145
<b>1.109-24-24</b>	38	42L	32,0	100	101	158