

## Druckarmaturen CEL Gerade

### Anschluss

metrisches Außengewinde mit 24° Innenkonus und Rohranschluss L-Reihe

### Norm

ISO 8434-1

### Anwendung

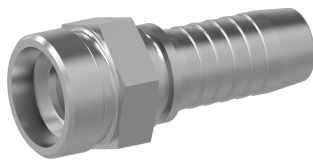
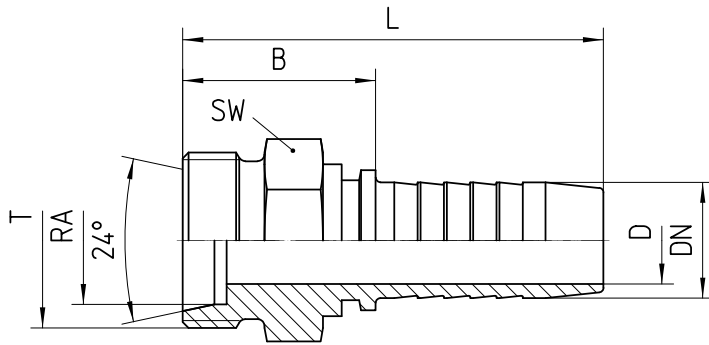
TE / SN / SC / SN-K / PTFE Schläuche

### Werkstoff

Stahl

### Oberfläche

galvanisch verzinkt



Bestell-Nr.	DN in mm	RA	T	SW in mm	min. D in mm	B±3 in mm	L±3 in mm

<b>1.170-03-04</b>	06	6L	M 12x1.5	14	4,0	23	51
<b>1.170-04-04</b>	06	8L	M 14x1.5	14	4,0	22	50
<b>1.170-05-04</b>	06	10L	M 16x1.5	17	4,0	23	51
<b>1.170-04-05</b>	08	8L	M 14x1.5	14	5,5	30	57
<b>1.170-05-05</b>	08	10L	M 16x1.5	17	5,5	24	52
<b>1.170-06-05</b>	08	12L	M 18x1.5	19	5,5	24	52
<b>1.170-05-06</b>	10	10L	M 16x1.5	17	7,0	24	54
<b>1.170-06-06</b>	10	12L	M 18x1.5	19	7,0	27	57
<b>1.170-08-06</b>	10	15L	M 22x1.5	22	7,0	25	55
<b>1.170-06-08</b>	12	12L	M 18x1.5	19	7,0	33	64
<b>1.170-08-08</b>	12	15L	M 22x1.5	22	10,0	30	61
<b>1.170-10-08</b>	12	18L	M 26x1.5	27	10,0	33	64
<b>1.170-08-10</b>	16	15L	M 22x1.5	22	13,0	36	70
<b>1.170-10-10</b>	16	18L	M 26x1.5	27	13,0	30	64
<b>1.170-12-10</b>	16	22L	M 30x2.0	30	13,0	37	71
<b>1.170-10-12</b>	19	18L	M 26x1.5	27	15,0	37	76
<b>1.170-12-12</b>	19	22L	M 30x2.0	32	15,0	33	72
<b>1.170-16-12</b>	19	28L	M 36x2.0	36	15,0	39	78
<b>1.170-12-16</b>	25	22L	M 30x2.0	30	15,0	42	88
<b>1.170-16-16</b>	25	28L	M 36x2.0	36	21,0	34	81
<b>1.170-20-16</b>	25	35L	M 45x2.0	46	21,0	44	90
<b>1.170-16-20</b>	31	28L	M 36x2.0	36	21,0	45	100
<b>1.170-20-20</b>	31	35L	M 45x2.0	46	27,0	38	93

<b>1.170-20-24</b>	38	35L	M 45x2.0	46	27,0	47	105
<b>1.170-24-24</b>	38	42L	M 52x2.0	55	32,0	41	99