

## Druckarmaturen BES 90°

### Anschluss

Rohranschluss für Schneidringverbindung S-Baureihe

### Norm

ISO 8434-1

### Anwendung

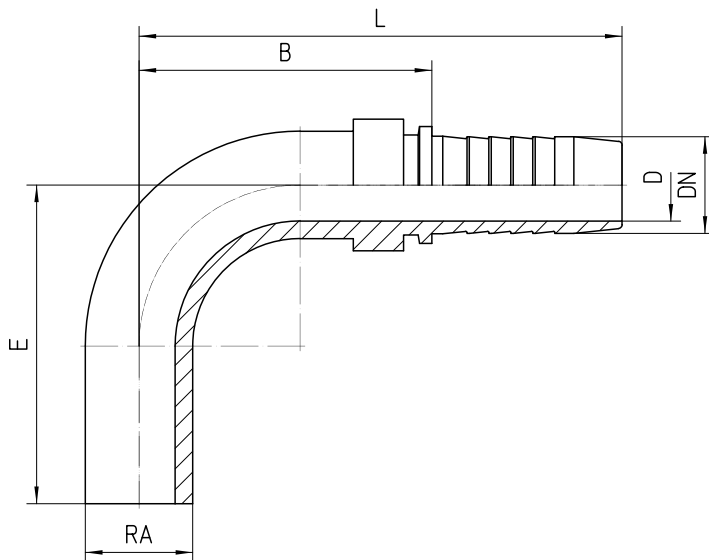
TE / SN / SC / SN-K / PTFE Schläuche

### Werkstoff

Stahl

### Oberfläche

galvanisch verzinkt





Bestell-Nr.	DN in mm	RA	min. D in mm	E±3 in mm	B±3 in mm	L±3 in mm
<b>1.129-02-04</b>	06	6S	3,0	35	36	63
<b>1.129-03-04</b>	06	8S	4,0	38	38	65
<b>1.129-04-04</b>	06	10S	4,0	40	40	67
<b>1.129-03-05</b>	08	8S	5,0	35	42	69
<b>1.129-04-05</b>	08	10S	5,5	40	41	68
<b>1.129-05-05</b>	08	12S	5,5	42	47	74
<b>1.129-05-06</b>	10	12S	7,0	42	45	75
<b>1.129-06-06</b>	10	14S	7,0	45	51	81
<b>1.129-08-06</b>	10	16S	7,0	60	59	89
<b>1.129-06-08</b>	12	14S	8,0	45	54	85
<b>1.129-08-08</b>	12	16S	10,0	60	62	93
<b>1.129-10-08</b>	12	20S	10,0	65	67	98
<b>1.129-10-10</b>	16	20S	13,0	65	68	102
<b>1.129-12-12</b>	19	25S	11,0	80	74	113
<b>1.129-16-16</b>	25	30S	21,0	90	87	133

1.129-20-20	31	38S	27,0	100	100	154
-------------	----	-----	------	-----	-----	-----