

Druckarmaturen AGJ Gerade

Anschluss

UN Außengewinde mit 74° Außenkonus

Norm

ISO 8434-2

Anwendung

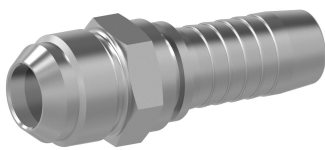
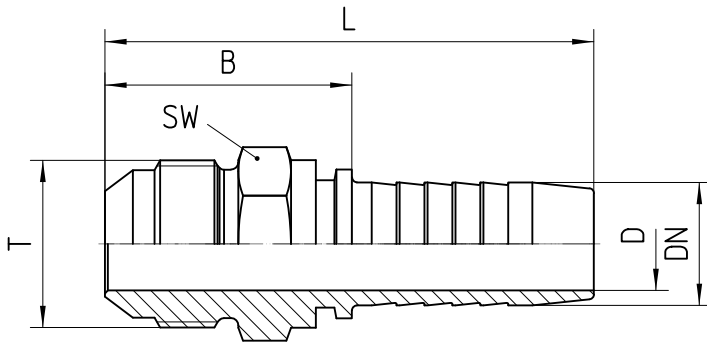
TE / SN / SC / SN-K / PTFE Schläuche

Werkstoff

Stahl

Oberfläche

galvanisch verzinkt



| Bestell-Nr. | DN in mm | T in UNF/UN | SW in mm | min. D in mm | B±3 in mm | L±3 in mm |
|-------------|----------|-------------|----------|--------------|-----------|-----------|
| | | | | | | |

| | | | | | | |
|--------------------|----|--------------|----|------|----|-----|
| 1.370-04-04 | 06 | 7/16-20 UNF | 12 | 4,0 | 27 | 55 |
| 1.370-05-04 | 06 | 1/2-20 UNF | 14 | 4,0 | 27 | 55 |
| 1.370-04-05 | 08 | 7/16-20 UNF | 14 | 4,0 | 38 | 65 |
| 1.370-05-05 | 08 | 1/2-20 UNF | 14 | 5,5 | 27 | 55 |
| 1.370-06-05 | 08 | 9/16-18 UNF | 15 | 5,5 | 27 | 55 |
| 1.370-05-06 | 10 | 1/2-20 UNF | 14 | 5,5 | 34 | 64 |
| 1.370-06-06 | 10 | 9/16-18 UNF | 15 | 7,0 | 27 | 57 |
| 1.370-08-06 | 10 | 3/4-16 UNF | 19 | 7,0 | 30 | 60 |
| 1.370-06-08 | 12 | 9/16-18 UNF | 17 | 7,0 | 38 | 69 |
| 1.370-08-08 | 12 | 3/4-16 UNF | 22 | 10,0 | 42 | 73 |
| 1.370-10-08 | 12 | 7/8-14 UNF | 27 | 10,0 | 44 | 75 |
| 1.370-08-10 | 16 | 3/4-16 UNF | 22 | 10,0 | 43 | 77 |
| 1.370-10-10 | 16 | 7/8-14 UNF | 27 | 12,0 | 45 | 79 |
| 1.370-12-10 | 16 | 1 1/16-12 UN | 27 | 13,0 | 50 | 84 |
| 1.370-10-12 | 19 | 7/8-14 UNF | 27 | 12,0 | 48 | 87 |
| 1.370-12-12 | 19 | 1 1/16-12 UN | 27 | 15,0 | 39 | 79 |
| 1.370-16-12 | 19 | 1 5/16-12 UN | 36 | 15,0 | 46 | 85 |
| 1.370-12-16 | 25 | 1 1/16-12 UN | 27 | 15,0 | 56 | 103 |
| 1.370-16-16 | 25 | 1 5/16-12 UN | 36 | 21,0 | 58 | 104 |
| 1.370-20-16 | 25 | 1 5/8-12 UN | 46 | 21,0 | 59 | 106 |
| 1.370-16-20 | 31 | 1 5/16-12 UN | 36 | 20,0 | 61 | 115 |
| 1.370-20-20 | 31 | 1 5/8-12 UN | 46 | 27,0 | 63 | 117 |
| 1.370-24-20 | 31 | 1 7/8-12 UN | 55 | 27,0 | 65 | 120 |
| | | | | | | |

| | | | | | | |
|--------------------|----|-------------|----|------|----|-----|
| 1.370-24-24 | 38 | 1 7/8-12 UN | 50 | 32,0 | 52 | 120 |
| 1.370-32-32 | 51 | 2 1/2-12 UN | 70 | 44,5 | 76 | 151 |