

Druckarmaturen SFL 90°

Anschluss

SAE-Flansch 3000PSI (L-Reihe)

Norm

ISO 6162-1

Anwendung

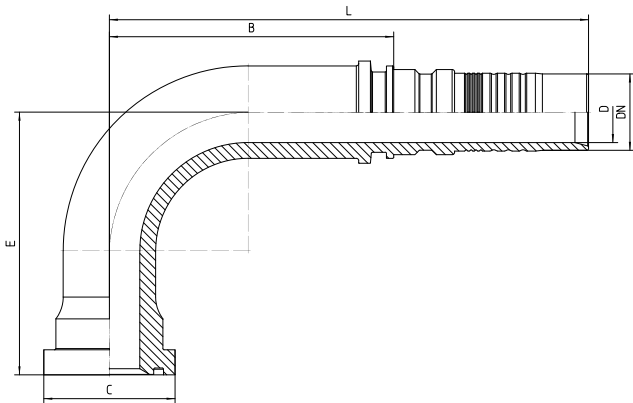
4SH / R15 / R13 (DN51) Schläuche

Werkstoff

Stahl

Oberfläche

galvanisch verzinkt



| Bestell-Nr. | DN in mm | Flansch in Zoll | C in mm | min. D in mm | E±3 in mm | B±3 in mm | L±3 in mm |
|-------------|----------|-----------------|---------|--------------|-----------|-----------|-----------|
| 7.470-12-12 | 19 | 3/4 | 38,1 | 15,0 | 64 | 72 | 128 |
| 7.470-16-16 | 25 | 1 | 44,5 | 20,0 | 88 | 93 | 160 |
| 7.470-20-20 | 31 | 1 1/4 | 50,8 | 25,0 | 108 | 117 | 197 |
| 7.470-24-24 | 38 | 1 1/2 | 60,3 | 30,0 | 117 | 139 | 230 |
| 7.470-32-24 | 38 | 2 | 71,4 | 40,0 | 135 | 139 | 230 |
| 7.470-32-32 | 51 | 2 | 71,4 | 40,0 | 140 | 133 | 224 |