

## Druckarmaturen BEL 45°

### Anschluss

Rohranschluss für Schneidringverbindung L-Baureihe

### Norm

ISO 8434-1

### Anwendung

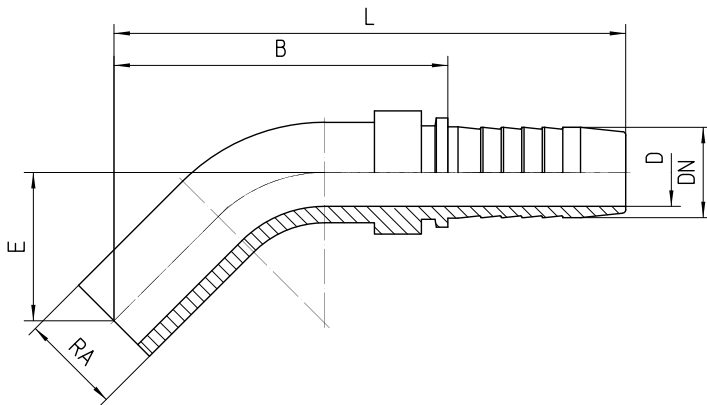
TE / SN / SC / SN-K / PTFE Schläuche

### Werkstoff

Stahl

### Oberfläche

galvanisch verzinkt



<b>Bestell-Nr.</b>	<b>DN in mm</b>	<b>RA</b>	<b>min. D in mm</b>	<b>E±3 in mm</b>	<b>B±3 in mm</b>	<b>L±3 in mm</b>
<b>1.105-03-04</b>	06	6L	3,0	20,0	51	78
<b>1.105-04-04</b>	06	8L	4,0	20,0	53	80
<b>1.105-05-04</b>	06	10L	4,0	22,0	54	81
<b>1.105-04-05</b>	08	8L	5,0	20,0	53	80
<b>1.105-05-05</b>	08	10L	5,5	22,0	53	80
<b>1.105-06-05</b>	08	12L	5,5	22,0	57	84
<b>1.105-05-06</b>	10	10L	7,0	22,0	52	82
<b>1.105-06-06</b>	10	12L	7,0	22,0	57	87
<b>1.105-08-06</b>	10	15L	7,0	22,5	61	91
<b>1.105-06-08</b>	12	12L	7,0	22,0	60	91
<b>1.105-08-08</b>	12	15L	10,0	22,5	63	94
<b>1.105-10-08</b>	12	18L	10,0	31,0	77	108
<b>1.105-10-10</b>	16	18L	13,0	31,0	76	110
<b>1.105-12-12</b>	19	22L	15,0	32,0	84	123
<b>1.105-16-16</b>	25	28L	21,0	40,0	95	141
<b>1.105-20-20</b>	31	35L	27,0	34,0	104	158
<b>1.105-24-24</b>	38	42L	32,0	46,0	112	169