

## Saug- & Niederdruckarmaturen SFL 90°

### Anschluss

SAE-Flansch 3000PSI (L-Reihe)

### Norm

ISO 6162-1

### Anwendung

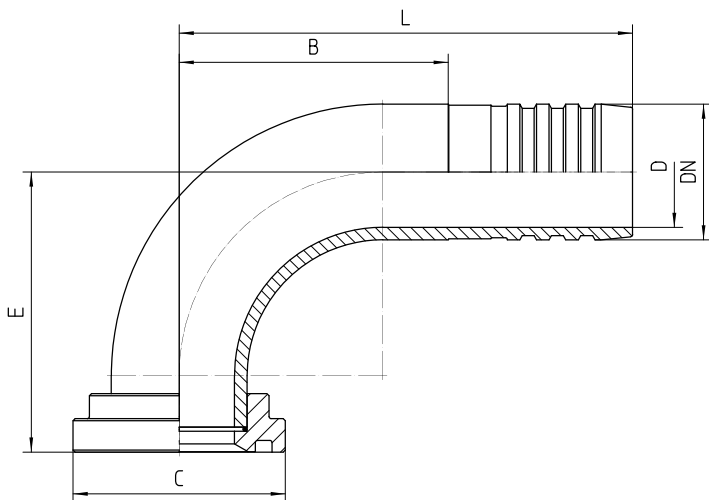
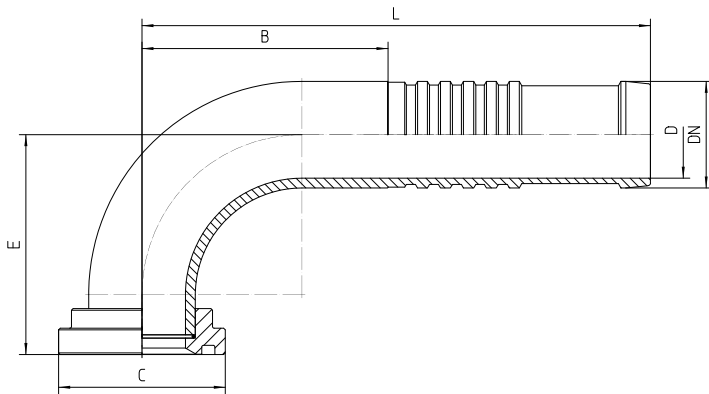
14A / 17A Schläuche

### Werkstoff

Stahl

### Oberfläche

galvanisch verzinkt



Bestell-Nr.	DN in	Flansch	C in	D in	E±3 in	B±3 in	L±3 in	Bestell-	B±3 in	L±3 in
-------------	-------	---------	------	------	--------	--------	--------	----------	--------	--------

	mm	in Zoll	mm	mm	mm	mm	mm	Nr.Kurz	mm	mm
<b>17.470-08-12</b>	19	1/2	30,2	14	57	47	127	17.470K-08-12	50	94
<b>17.470-12-12</b>	19	3/4	38,1	14	57	47	127	17.470K-12-12	50	94
<b>17.470-16-12</b>	19	1	44,4	14	57	47	127	17.470K-16-12	50	94
<b>17.470-20-12</b>	19	1 1/4	50,8	14	57	47	127	17.470K-20-12	50	94
<b>17.470-12-16</b>	25	3/4	38,1	19	63	59	139	17.470K-12-16	56	100
<b>17.470-16-16</b>	25	1	44,4	19	57	59	139	17.470K-16-16	56	100
<b>17.470-20-16</b>	25	1 1/4	50,8	19	54	59	139	17.470K-20-16	56	100
<b>17.470-24-16</b>	25	1 1/2	60,3	19	58	59	139	17.470K-24-16	56	100
<b>17.470-12-20</b>	31	3/4	38,1	26	90	75	155	17.470K-12-20	62	106
<b>17.470-16-20</b>	31	1	44,4	26	72	75	155	17.470K-16-20	62	106
<b>17.470-20-20</b>	31	1 1/4	50,8	26	67	75	155	17.470K-20-20	62	106
<b>17.470-24-20</b>	31	1 1/2	60,3	26	68	75	155	17.470K-24-20	62	106
<b>17.470-32-20</b>	31	2	71,4	26	96	75	155	17.470K-32-20	62	106
<b>17.470-16-24</b>	38	1	44,4	32	87	90	170	17.470K-16-24	71	115
<b>17.470-20-24</b>	38	1 1/4	50,8	32	87	90	170	17.470K-20-24	71	115
<b>17.470-24-24</b>	38	1 1/2	60,3	32	78	90	170	17.470K-24-24	71	115

<b>17.470-32-24</b>	38	2	71,4	32	95	90	170	17.470K-32-24	71	115
<b>17.470-40-24</b>	38	2 1/2	84,1	32	118	90	170	17.470K-40-24	71	115
<b>17.470-20-32</b>	51	1 1/4	50,8	44	117	128	220	17.470K-20-32	121	166
<b>17.470-24-32</b>	51	1 1/2	60,3	44	117	128	220	17.470K-24-32	121	166
<b>17.470-32-32</b>	51	2	71,4	44	117	128	220	17.470K-32-32	121	166
<b>17.470-40-32</b>	51	2 1/2	84,1	44	108	128	220	17.470K-40-32	121	166
<b>17.470-48-32</b>	51	3	101,6	44	110	128	220	17.470K-48-32	121	166
<b>17.470-24-36</b>	60	1 1/2	60,3	53	127	89	181	17.470K-24-36	96	141
<b>17.470-32-36</b>	60	2	71,4	53	108	89	181	17.470K-32-36	96	141
<b>17.470-40-36</b>	60	2 1/2	84,1	53	110	89	181	17.470K-40-36	96	141
<b>17.470-48-36</b>	60	3	101,6	53	120	89	181	17.470K-48-36	96	141
<b>17.470-56-36</b>	60	3 1/2	114,3	53	145	89	181	17.470K-56-36	96	141
<b>17.470-32-48</b>	76	2	71,4	69	160	123	215	17.470K-32-48	130	175
<b>17.470-40-48</b>	76	2 1/2	84,1	69	130	123	215	17.470K-40-48	130	175
<b>17.470-48-48</b>	76	3	101,6	69	130	123	215	17.470K-48-48	130	175
<b>17.470-56-48</b>	76	3 1/2	114,3	69	160	162	254	17.470K-56-48	149	194
<b>17.470-64-48</b>	76	4	127,0	69	160	163	255	17.470K-	150	195

								64-48		
<b>17.470-40-56</b>	90	2 1/2	84,1	82	175	142	234	17.470K-40-56	149	194
<b>17.470-48-56</b>	90	3	101,6	82	165	142	234	17.470K-48-56	149	194
<b>17.470-56-56</b>	90	3 1/2	114,3	82	136	142	234	17.470K-56-56	149	194
<b>17.470-64-56</b>	90	4	127,0	82	160	142	234	17.470K-64-56	149	194
<b>17.470-80-56</b>	90	5	152,4	82	204	142	234	17.470K-80-56	149	194
<b>17.470-48-64</b>	102	3	101,6	94	200	161	253	17.470K-48-64	165	213
<b>17.470-56-64</b>	102	3 1/2	114,3	94	186	161	253	17.470K-56-64	165	213
<b>17.470-64-64</b>	102	4	127,0	94	160	161	253	17.470K-64-64	165	213
<b>17.470-80-64</b>	102	5	152,4	94	204	161	253	17.470K-80-64	165	213
<b>17.470-56-96</b>	152	3 1/2	114,3	142	265	222	350	17.470K-56-96	230	310
<b>17.470-64-96</b>	152	4	127,0	142	200	316	444	17.470K-64-96	230	310
<b>17.470-80-96</b>	152	5	152,4	142	243	222	350	17.470K-80-96	230	310