

## Saug- & Niederdruckarmaturen DIN Flansch Lose Gerade

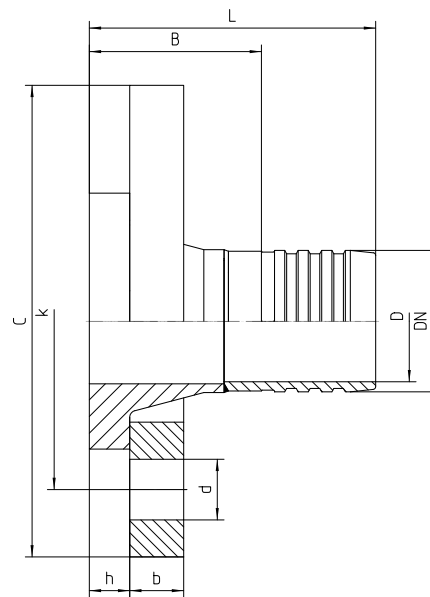
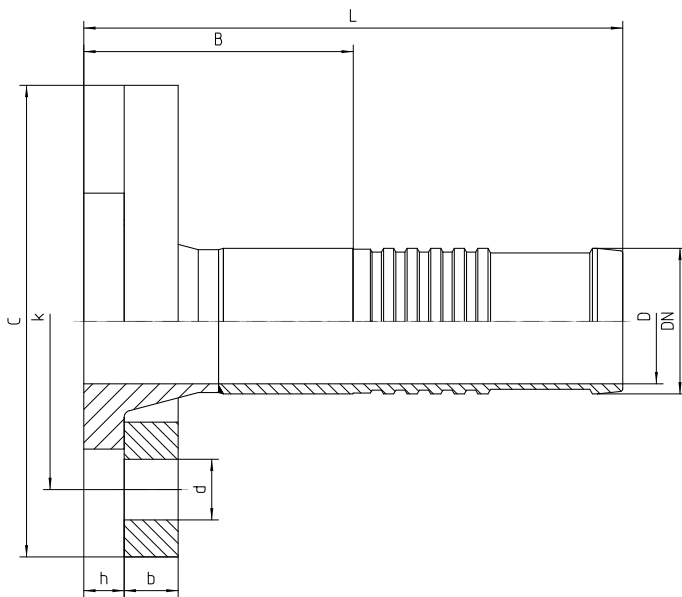
**Anschluss**  
DIN-Flansch lose

**Norm**  
DIN 2673 (neu: EN1092-1, Typ 04 PN16 und Typ 34 PN16)

**Anwendung**  
14A / 17A Schläuche

**Werkstoff**  
Stahl

**Oberfläche**  
galvanisch verzinkt



Bestell-Nr.	DN in mm	DN DIN Flansch	C in mm	b in mm	k in mm	Schrauben Gewinde (Anzahl)	d in mm	h in mm	D in mm	B±3 in mm	L±3 in mm	Bestell-Nr. Kurz	B±3 in mm	L±3 in mm
17.434-12-12	19	20	105	14 (16)	75	M12 (4)	14	12 (14)	14	60	140	17.434K-12-12	56	100
17.434-16-12	19	25	115	16	85	M12 (4)	14	12 (14)	14	90	170	17.434K-16-12	86	130
17.434-12-16	25	20	105	14 (16)	75	M12 (4)	14	12 (14)	19	60	140	17.434K-12-16	56	100
17.434-16-16	25	25	115	16	85	M12 (4)	14	12 (14)	19	60	140	17.434K-16-16	56	100

<b>17.434-20-16</b>	25	32	140	16 (18)	100	M16 (4)	18	12 (14)	19	60 (62)	140 (142)	17.434K- 20-16	56 (58)	100 (102)
<b>17.434-12-20</b>	31	20	105	14 (16)	75	M12 (4)	14	12 (14)	26	60	140	17.434K- 12-20	56	100
<b>17.434-16-20</b>	31	25	115	16	85	M12 (4)	14	12 (14)	26	60	140	17.434K- 16-20	56	100
<b>17.434-20-20</b>	31	32	140	16 (18)	100	M16 (4)	18	12 (14)	26	60 (62)	140 (142)	17.434K- 20-20	56 (58)	100 (102)
<b>17.434-24-20</b>	31	40	150	16 (18)	110	M16 (4)	18	12 (14)	26	60 (65)	140 (145)	17.434K- 24-20	56 (61)	100 (105)
<b>17.434-12-24</b>	38	20	105	14 (16)	75	M12 (4)	14	12 (14)	32	90	170	17.434K- 12-24	86	130
<b>17.434-16-24</b>	38	25	115	16	85	M12 (4)	14	12 (14)	32	90	170	17.434K- 16-24	86	130
<b>17.434-20-24</b>	38	32	140	16 (18)	100	M16 (4)	18	12 (14)	32	60 (62)	140 (142)	17.434K- 20-24	56 (58)	100 (102)
<b>17.434-24-24</b>	38	40	150	16 (18)	110	M16 (4)	18	12 (14)	32	60 (65)	140 (145)	17.434K- 24-24	56 (61)	100 (105)
<b>17.434-32-24</b>	38	50	165	16 (20)	125	M16 (4)	18	14 (16)	32	80	160	17.434K- 32-24	76	120
<b>17.434-16-32</b>	51	25	115	16	85	M12 (4)	14	12 (14)	44	98	190	17.434K- 16-32	105	150
<b>17.434-20-32</b>	51	32	140	16 (18)	100	M16 (4)	18	12 (14)	44	68 (70)	160 (162)	17.434K- 20-32	75 (77)	120 (122)
<b>17.434-24-32</b>	51	40	150	16 (18)	110	M16 (4)	18	12 (14)	44	53 (58)	145 (150)	17.434K- 24-32	60 (65)	105 (110)
<b>17.434-32-32</b>	51	50	165	16 (20)	125	M16 (4)	18	14 (16)	44	63	155	17.434K- 32-32	65	110
<b>17.434-40-32</b>	51	65	185	16 (20)	145	M16 (4(8))	18	14 (16)	44	68	160	17.434K- 40-32	85	130
<b>17.434-16-36</b>	60	25	115	16	85	M12 (4)	14	12 (14)	53	93	185	17.434K- 16-36	100	145
<b>17.434-20-36</b>	60	32	140	16 (18)	100	M16 (4)	18	12 (14)	53	78 (80)	170 (172)	17.434K- 20-36	85 (87)	130 (132)
<b>17.434-24-36</b>	60	40	150	16 (18)	110	M16 (4)	18	12 (14)	53	68 (73)	160 (165)	17.434K- 24-36	75 (80)	120 (125)
<b>17.434-32-36</b>	60	50	165	16 (20)	125	M16 (4)	18	14 (16)	53	58	150	17.434K- 32-36	65	110

17.434-40-36	60	65	185	16 (20)	145	M16 (4(8))	18	14 (16)	53	73	165	17.434K-40-36	100	145
17.434-48-36	60	80	200	18 (20)	160	M16 (8)	18	16	53	78	170	17.434K-48-36	85	130
17.434-20-48	76	32	140	16 (18)	100	M16 (4)	18	12 (14)	69	98 (100)	190 (192)	17.434K-20-48	105 (107)	150 (152)
17.434-24-48	76	40	150	16 (18)	110	M16 (4)	18	12 (14)	69	98 (103)	190 (195)	17.434K-24-48	105 (110)	150 (155)
17.434-32-48	76	50	165	16 (20)	125	M16 (4)	18	14 (16)	69	73	165	17.434K-32-48	80	125
17.434-40-48	76	65	185	16 (20)	145	M16 (4(8))	18	14 (16)	69	73	165	17.434K-40-48	80	125
17.434-48-48	76	80	200	18 (20)	160	M16 (8)	18	16	69	78	170	17.434K-48-48	85	130
17.434-64-48	76	100	220	18 (22)	180	M16 (8)	18	16 (18)	69	98 (100)	190 (192)	17.434K-64-48	105 (107)	150 (152)
17.434-24-56	90	40	150	16 (18)	110	M16 (4)	18	12 (14)	82	116 (121)	208 (213)	17.434K-24-56	123 (128)	168 (173)
17.434-32-56	90	50	165	16 (20)	125	M16 (4)	18	14 (16)	82	121	213	17.434K-32-56	128	173
17.434-40-56	90	65	185	16 (20)	145	M16 (4(8))	18	14 (16)	82	85	113	17.434K-40-56	90	135
17.434-48-56	90	80	200	18 (20)	160	M16 (8)	18	16	82	88	180	17.434K-48-56	95	140
17.434-64-56	90	100	220	18 (22)	180	M16 (8)	18	16 (18)	82	86 (88)	178 (180)	17.434K-64-56	93 (95)	138 (140)
17.434-32-64	102	50	165	16 (20)	125	M16 (4)	18	14 (16)	94	123	215	17.434K-32-64	127	175
17.434-40-64	102	65	185	16 (20)	145	M16 (4(8))	18	14 (16)	94	113	205	17.434K-40-64	117	165
17.434-48-64	102	80	200	18 (20)	160	M16 (8)	18	16	94	76	168	17.434K-48-64	80	128
17.434-64-64	102	100	220	18 (22)	180	M16 (8)	18	16 (18)	94	78 (80)	170 (172)	17.434K-64-64	82 (84)	130 (132)
17.434-80-64	102	125	250	18 (22)	210	M16 (8)	18	18	94	148 (153)	240 (245)	17.434K-80-64	152 (157)	200 (205)
17.434-64-96	152	100	220	18 (22)	180	M16 (8)	18	16 (18)	142	215 (217)	343 (345)	17.434K-64-96	115 (117)	195 (197)

<b>17.434-80-96</b>	152	125	250	18 (22)	210	M16 (8)	18	18	142	82 (87)	210 (215)	17.434K- 80-96	90 (95)	170 (175)
<b>17.434-96-96</b>	152	150	285	18 (24)	240	M20 (8)	22	18 (20)	142	82 (87)	210 (215)	17.434K- 96-96	77 (82)	157 (162)
<b>17.434-128-96</b>	152	200	340	20 (26)	295	M20 (12)	22	20	142	184 (191)	312 (319)	17.434K- 128-96	110 (117)	190 (197)

**Hinweis**

() abweichende Maße bei Verwendung von EN-Flanschen