

## Saug- & Niederdruckarmaturen Pressfassung 115

### Anwendung

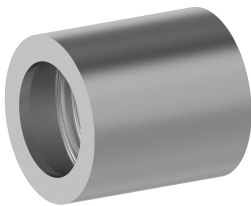
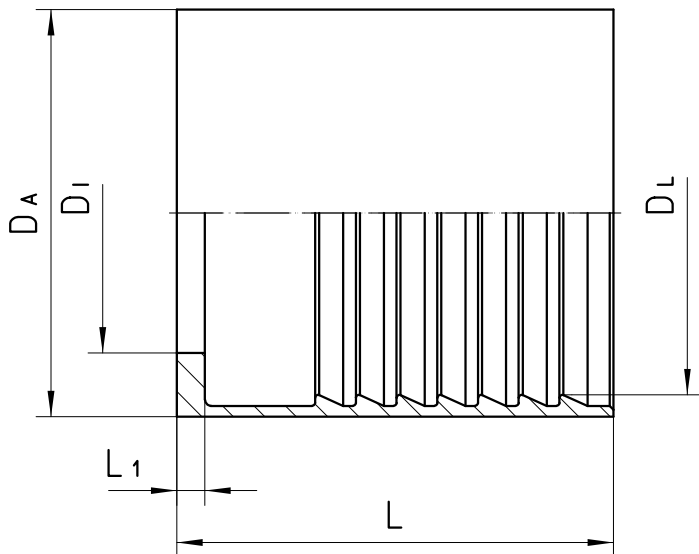
dH15 (auf Anfrage)  
KARA/25 Schläuche

### Werkstoff

Stahl

### Oberfläche

galvanisch verzinkt



Bestell-Nr.	DN in mm	DA in mm	DL in mm	DI in mm	L1 in mm	L in mm
-------------	----------	----------	----------	----------	----------	---------

<b>115-20</b>	31	55	49,1	37,8	3,8	59,0
<b>115-24</b>	38	67	55,5	45,5	4,2	76,7
<b>115-32</b>	51	80	68,2	57,8	4,4	80,2
<b>115-40</b>	63	98	86,0	75,0	4,5	75,0
<b>115-48</b>	76	108	98,0	87,0	4,5	80,0
<b>115-64</b>	102	143	130,0	113,0	8,6	130,0