

Saug- & Niederdruckarmaturen Pressfassung 116

Anwendung

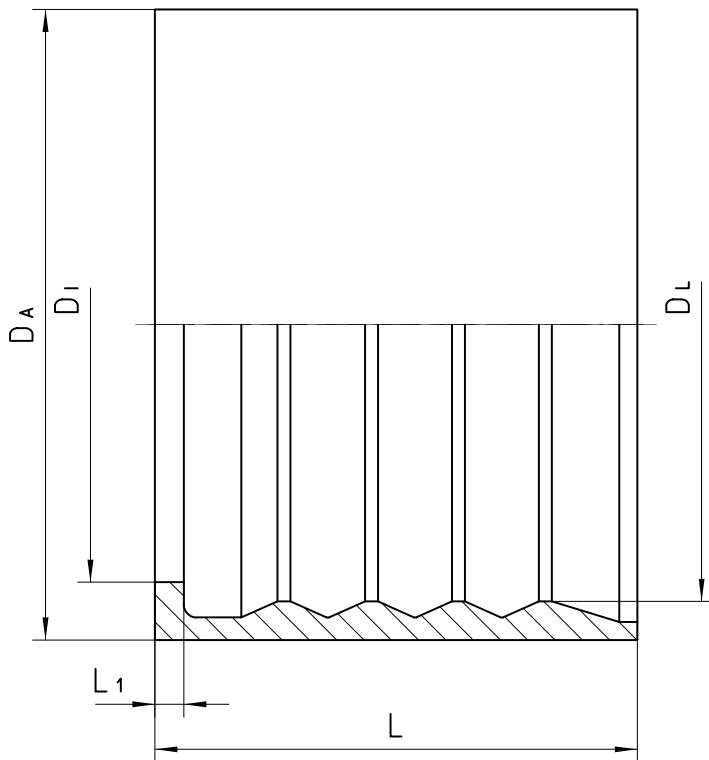
dH15 (auf Anfrage)
TW Schläuche

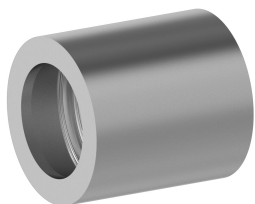
Werkstoff

Stahl

Oberfläche

galvanisch verzinkt





| Bestell-Nr. | DN in mm | DA in mm | DL in mm | DI in mm | L1 ±0,1 in mm | L in mm |
|---------------|----------|----------|----------|----------|---------------|---------|
| 116-40 | 63 | 98 | 86 | 80 | 4,5 | 75 |
| 116-48 | 76 | 108 | 98 | 91 | 4,5 | 80 |
| 116-50 | 80 | 110 | 100 | 92 | 7,8 | 100 |
| 116-64 | 102 | 136 | 121 | 112 | 8,8 | 130 |