

## Pressure fittings CES straight

### Connection

Metric male thread 24° with inner cone, dan pipe connection S series

### Standard

ISO 8434-1

### Application

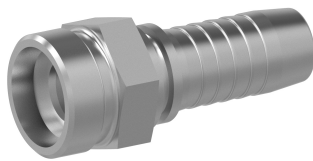
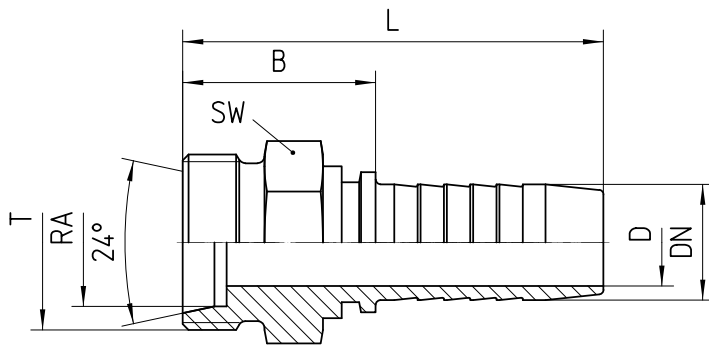
TE / SN / SC / SN-K / PTFE flexible tubes

### Material

Steel

### Surface protection

Zinc-electroplated



Bestell-Nr.	DN in mm	RA	T	SW in mm	min. D in mm	B±3 in mm	L±3 in mm

<b>1.180-03-04</b>	06	8S	M 16x1.5	17	4,0	28	55
<b>1.180-04-04</b>	06	10S	M 18x1.5	19	4,0	28	55
<b>1.180-05-04</b>	06	12S	M 20x1.5	22	4,0	29	56
<b>1.180-04-05</b>	08	10S	M 18x1.5	19	5,5	29	56
<b>1.180-05-05</b>	08	12S	M 20x1.5	22	5,5	28	55
<b>1.180-06-05</b>	08	14S	M 22x1.5	22	5,5	34	61
<b>1.180-05-06</b>	10	12S	M 20x1.5	22	7,0	27	57
<b>1.180-06-06</b>	10	14S	M 22x1.5	22	7,0	33	63
<b>1.180-08-06</b>	10	16S	M 24x1.5	24	7,0	32	62
<b>1.180-06-08</b>	12	14S	M 22x1.5	22	10,0	36	67
<b>1.180-08-08</b>	12	16S	M 24x1.5	27	10,0	33	64
<b>1.180-10-08</b>	12	20S	M 30x2.0	30	10,0	35	66
<b>1.180-08-10</b>	16	16S	M 24x1.5	24	13,0	36	70
<b>1.180-10-10</b>	16	20S	M 30x2.0	30	13,0	38	72
<b>1.180-12-10</b>	16	25S	M 36x2.0	36	13,0	37	71
<b>1.180-10-12</b>	19	20S	M 30x2.0	30	15,0	36	75
<b>1.180-12-12</b>	19	25S	M 36x2.0	36	15,0	41	80
<b>1.180-16-12</b>	19	30S	M 42x2.0	46	15,0	46	85
<b>1.180-12-16</b>	25	25S	M 36x2.0	36	20,0	49	95
<b>1.180-16-16</b>	25	30S	M 42x2.0	46	21,1	44	90
<b>1.180-20-16</b>	25	38S	M 52x2.0	55	21,1	52	98
<b>1.180-16-20</b>	31	30S	M 42x2.0	46	21,0	55	109
<b>1.180-20-20</b>	31	38S	M 52x2.0	55	27,0	45	99

1.180-20-24	38	38S	M 52x2.0	55	32,5	49	106
-------------	----	-----	----------	----	------	----	-----