

## Pressure fittings AGR cylindrical straight

### Connection

BSPB male thread (G) with 60° inner cone

### Standard

ISO 8434-6

### Application

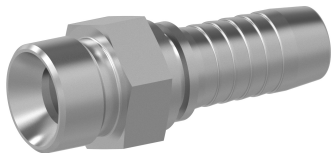
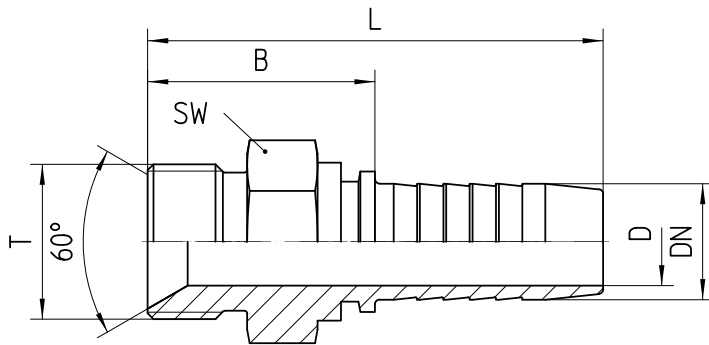
TE / SN / SC / SN-K / PTFE flexible tubes

### Material

Steel

### Surface protection

Zinc-electroplated



Bestell-Nr.	DN in mm	T in inch	SW in mm	min. D in mm	B±3 in mm	L±3 in mm
1.260-02-04	06	G 1/8	14	4,0	21	49
1.260-04-04	06	G 1/4	19	4,0	27	55
1.260-06-04	06	G 3/8	22	4,0	28	56
1.260-04-05	08	G 1/4	19	5,5	27	55
1.260-06-05	08	G 3/8	22	5,5	28	56
1.260-04-06	10	G 1/4	19	6,9	27	57
1.260-06-06	10	G 3/8	22	7,0	29	59
1.260-08-06	10	G 1/2	27	7,0	33	63
1.260-06-08	12	G 3/8	22	10,0	38	69
1.260-08-08	12	G 1/2	22	10,0	41	72
1.260-10-08	12	G 5/8	30	10,0	42	73
1.260-08-10	16	G 1/2	22	10,0	42	76
1.260-10-10	16	G 5/8	30	13,0	44	78
1.260-12-10	16	G 3/4	30	13,0	42	76
1.260-10-12	19	G 5/8	30	13,5	47	86
1.260-12-12	19	G 3/4	32	15,0	37	77
1.260-16-12	19	G 1	36	15,0	48	87
1.260-12-16	25	G 3/4	30	15,0	49	95
1.260-16-16	25	G 1	36	21,0	41	87
1.260-20-16	25	G 1 1/4	46	21,0	53	99
1.260-16-20	31	G 1	36	23,0	61	115
1.260-20-20	31	G 1 1/4	46	26,5	62	116

<b>1.260-24-20</b>	31	G 1 1/2	50	27,0	57	111
<b>1.260-20-24</b>	38	G 1 1/4	46	27,0	48	106
<b>1.260-24-24</b>	38	G 1 1/2	50	32,8	68	125
<b>1.260-32-24</b>	38	G 2	65	32,8	71	128
<b>1.260-24-32</b>	51	G 1 1/2	50	31,0	61	136
<b>1.260-32-32</b>	51	G 2	65	44,5	51	126
<b>1.260-40-32</b>	51	G 2 1/2	80	44,0	65	140
<b>1.260-32-36</b>	60	G 2	65	44,5	102	182
<b>1.260-40-36</b>	60	G 2 1/2	80	52,0	65	145
<b>1.260-48-36</b>	60	G 3	90	52,0	65	145
<b>1.260-40-40</b>	63	G 2 1/2	80	52,0	63	143
<b>1.260-40-48</b>	76	G 2 1/2	80	58,0	85	160
<b>1.260-48-48</b>	76	G 3	90	68,0	85	160