

## Pressure fittings AGN straight

### Connection

NPT male thread coned sealing

### Application

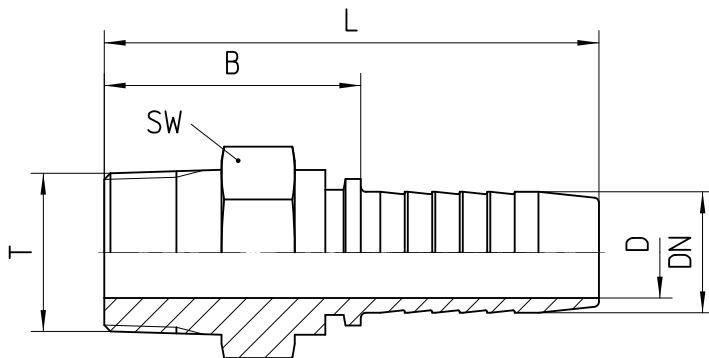
TE / SN / SC / SN-K / PTFE flexible tubes

### Material

Steel

### Surface protection

Zinc-electroplated



Bestell-Nr.	DN in mm	T in NPTF	SW in mm	min. D in mm	B±3 in mm	L±3 in mm
1.300-02-04	06	1/8 - 27 NPTF	12	4,0	22	50
1.300-04-04	06	1/4 - 18 NPTF	15	4,0	28	56

<b>1.300-06-04</b>	06	3/8 - 18 NPTF	19	4,0	28	56
<b>1.300-04-05</b>	08	1/4 - 18 NPTF	15	5,5	28	56
<b>1.300-06-05</b>	08	3/8 - 18 NPTF	19	5,5	28	56
<b>1.300-04-06</b>	10	1/4 - 18 NPTF	17	7,0	27	57
<b>1.300-06-06</b>	10	3/8 - 18 NPTF	19	7,0	28	58
<b>1.300-08-06</b>	10	1/2 - 14 NPTF	22	7,0	34	64
<b>1.300-06-08</b>	12	3/8 - 18 NPTF	19	7,0	44	75
<b>1.300-08-08</b>	12	1/2 - 14 NPTF	22	10,0	49	80
<b>1.300-08-10</b>	16	1/2 - 14 NPTF	22	13,0	40	74
<b>1.300-12-10</b>	16	3/4 - 14 NPTF	27	13,0	50	84
<b>1.300-12-12</b>	19	3/4 - 14 NPTF	27	15,0	42	81
<b>1.300-16-12</b>	19	1 - 11 1/2 NPTF	41	15,0	50	89
<b>1.300-16-16</b>	25	1 - 11 1/2 NPTF	41	21,0	50	96
<b>1.300-16-20</b>	31	1 - 11 1/2 NPTF	41	21,0	55	110
<b>1.300-20-20</b>	31	1 1/4 - 11 1/2 NPTF	46	27,0	67	121
<b>1.300-24-24</b>	38	1 1/2 - 11 1/2 NPTF	50	32,0	49	117
<b>1.300-32-32</b>	51	2 - 11 1/2 NPTF	65	44,5	56	131