

## Pressure fittings Kombi SKIVE (100)

### Connection

Combination press holder SKIVE for dH1000

### Application

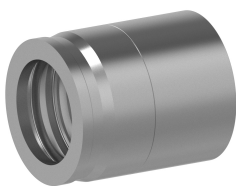
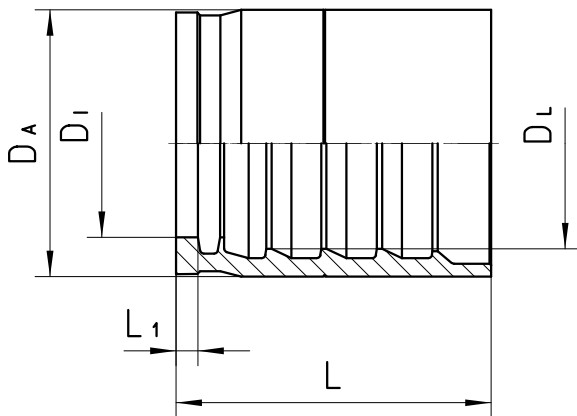
dH1000  
SN / TE (NO-SKIVE) flexible tubes

### Material

Steel

### Surface protection

Zinc-electroplated



Bestell-Nr.	DN in mm	DA in mm	DI in mm	DL in mm	L in mm	L1 in mm
100-04	06	19,0	11,5	13,5	29,0	2,5

<b>100-05</b>	08	21,0	13,3	15,5	29,0	2,4
<b>100-06</b>	10	23,0	14,5	17,5	31,5	2,5
<b>100-08</b>	12	27,0	18,8	21,0	34,0	2,6
<b>100-10</b>	16	32,0	22,0	24,5	37,0	2,6
<b>100-12</b>	19	36,0	25,4	28,5	42,5	2,95
<b>100-16</b>	25	44,0	31,3	36,0	49,0	3,7