

## Pressure fittings SFL 90°

### Connection

SAE-flange 3000PSI (L series)

### Standard

ISO 6162-1

### Application

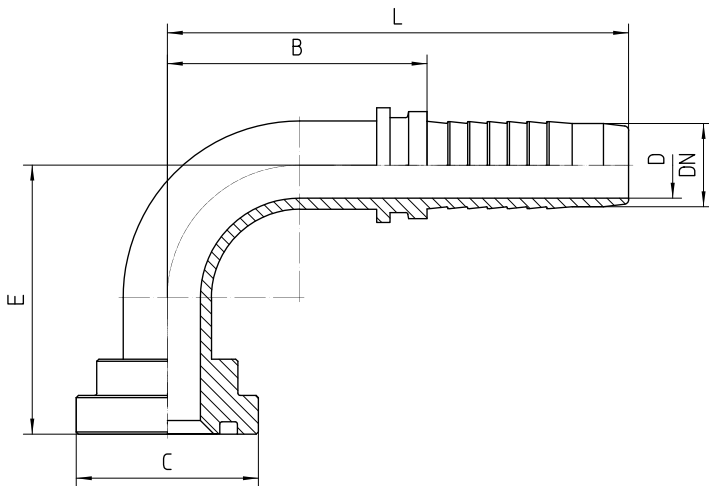
3SPC / 4SP hoses / 4SH19 / 4SH25

### Material

Steel

### Surface protection

Zinc-electroplated



Bestell-Nr.	DN in mm	flange in inch	C in mm	min. D in mm	E±3 in mm	B±3 in mm	L±3 in mm
<b>4.470-08-08</b>	12	1/2	30,2	9,0	42	42	80
<b>4.470-12-08</b>	12	3/4	38,1	9,0	41	42	80
<b>4.470-08-10</b>	16	1/2	30,2	12,0	54	52	94
<b>4.470-12-10</b>	16	3/4	38,1	12,0	54	52	94
<b>4.470-08-12</b>	19	1/2	30,2	13,5	60	60	106
<b>4.470-12-12</b>	19	3/4	38,1	14,8	58	60	106
<b>4.470-16-12</b>	19	1	44,5	14,8	60	61	107
<b>4.470-12-16</b>	25	3/4	38,1	19,9	69	65	120
<b>4.470-16-16</b>	25	1	44,5	19,9	69	65	120
<b>4.470-20-16</b>	25	1 1/4	50,8	19,9	69	65	120