

## Pressure fittings SFS 90°

### Connection

SAE flange 6000 PSI (S series)

### Standard

ISO 6162-2

### Application

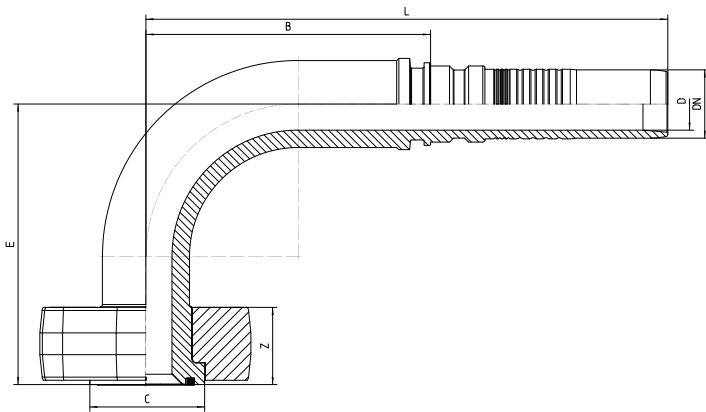
560 bar flexible tubes

### Material

Steel

### Surface protection

Zinc-electroplated



Bestell-Nr.	DN in mm	Flange in inch	C in mm	min. D in mm	E±3 in mm	B±3 in mm	L±3 in mm	Z in mm	S1 in mm	S2 in mm	T1 in mm	T2 in mm	cheese-head screw 4x DIN EN ISO 4762 12.9	Kantseal ring 90 Shore
8.871-12-12	19	3/4	41,3	14,0	76	77	148	28,5 ± 0,2	23,8	50,8	62,0 +0,9 -0,5	73,0 +0,9 -0,5	M10x45	24,99x3,40
8.871-16-12	19	1	48,0	14,0	75	77	148	28,5 ± 0,2	27,8	57,22	73,5 +0,9 -0,5	82,5 +0,9 -0,5	M12x50	23,99x3,40
8.871-16-16	25	1	48,0	19,0	93	118	207	28,5 ± 0,2	27,8	57,22	73,5 +0,9 -0,5	82,5 +0,9 -0,5	M12x50	32,99x3,40
8.871-20-16	25	1 1/4	54,0	19,0	100	115	203	35,5	31,8	66,7	83,5	96,5	M14x55	37,69x3,40

								± 0,3			+1,1 -0,5	+1,1 -0,5		
<b>8.871-20-20</b>	31	1 1/4	54,0	24,0	129	131	240	35,5 ± 0,3	31,8	66,7	83,5 +1,1 -0,5	96,5 +1,1 -0,5	M14x55	37,69x3,40